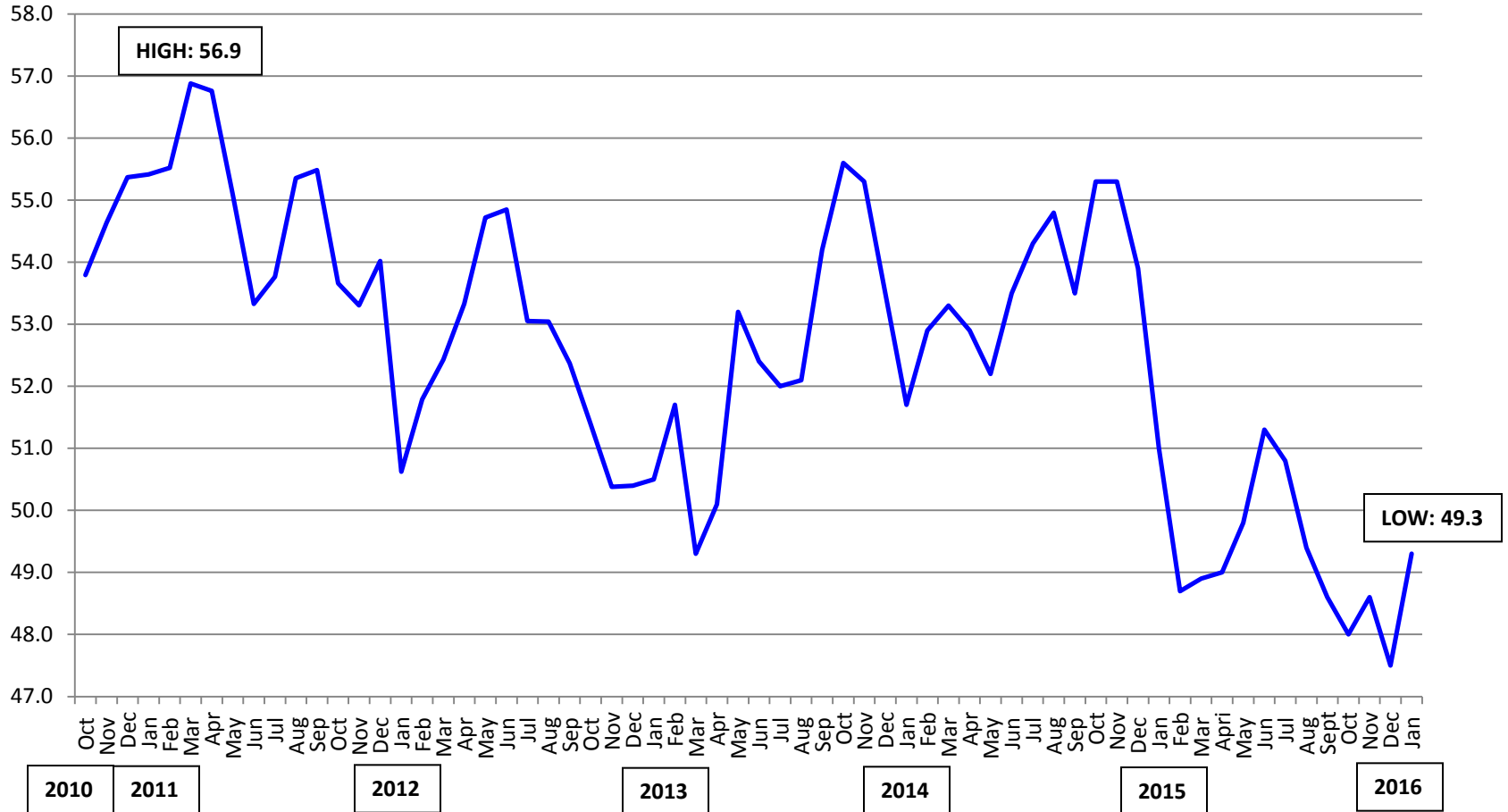


RBC Canadian Manufacturing PMI™

RBC PMI: Manufacturing downturn moderates at the start of 2016



50 = no change from previous month

Source: RBC, Markit

The intellectual property rights to the RBC Canadian Manufacturing PMI provided herein is owned by Markit Economics Limited. Any unauthorised use, including but not limited to copying, distributing, transmitting or otherwise of any data appearing is not permitted without Markit's prior consent. Markit shall not have any liability, duty or obligation for or relating to the content of information ("data") contained herein, any errors, inaccuracies, omissions or delays in the data, or for any actions taken in reliance thereon. In no event shall Markit be liable for any special, incidental, or consequential damages, arising out of the use of the data. *Purchasing Managers' Index™* and *PMI™* are trade marks of Markit Economics Limited, RBC use the above marks under licence.